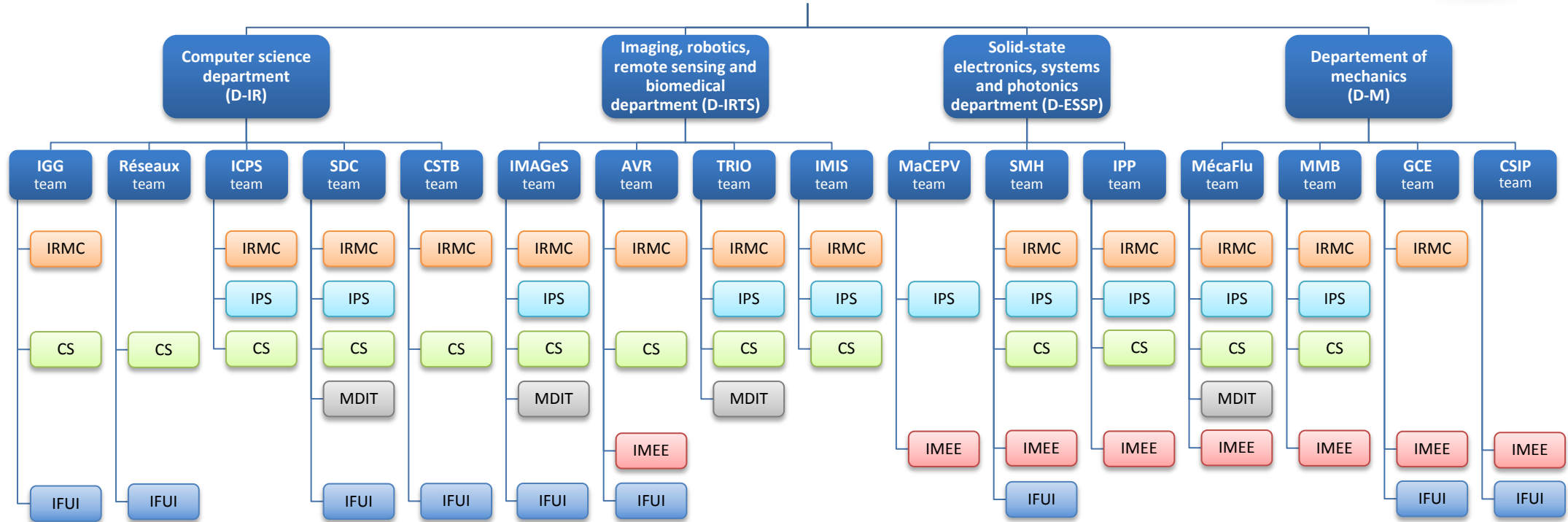


Organizational chart of transversal research programs



Teams		Programs	
IGG	Geometry and Computer Graphics	IRMC	Medical and surgical imaging and robotics
----	Networks	IPS	IGG-ICPS-SDC-CSTB-IMAGeS-AVR-TRIO-IMIS-SMH-IPP-MecaFlu-MMB-GCE
ICPS	Scientific and Parallel Computing	CS	Imaging physics and systems
SDC	Data Science and Knowledge	MDIT	ICPS-SDC-IMAGeS-TRIO-IMIS-MaCEPV-SMH-IPP-MecaFlu-MMB
CSTB	Complex Systems and Translational Bioinformatics	IMEE	Scientific computing
IMAGeS	IMages, leArning, Geometry, and Statistics	IFUI	IGG-Networks-ICPS-SDC-CSTB-IMAGeS-AVR-TRIO-IMIS-SMH-IPP-MécaFlu-MMB
AVR	Control, Vision and Robotics		Masse de données, Images et télédétection pour l'environnement
TRIO	Remote Sensing, Radiometry and Optical Imaging		SDC-IMAGeS-TRIO-MecaFlu
IMIS	Integrative Multimodal Imaging in Healthcare		Material engineering for energy and environmental applications
MaCEPV	Materials for Photovoltaic and Electronic Devices		AVR-MaCEPV-SMH-IPP-MecaFlu-MMB-GCE-CSIP
SMH	Heterogeneous Systems and Microsystems		Industrie du Futur et Usine Intelligente
IPP	Photonics Instrumentation and Processes		IGG-Networks-SDC-CSTB-IMAGeS-AVR-SMH-GCE-CSIP
MecaFlu	Fluid Mechanics		
MMB	Multiscale Materials and Biomechanics		
GCE	Civil Engineering and Energetics		
CSIP	Design Information Systems Inventive Processes		